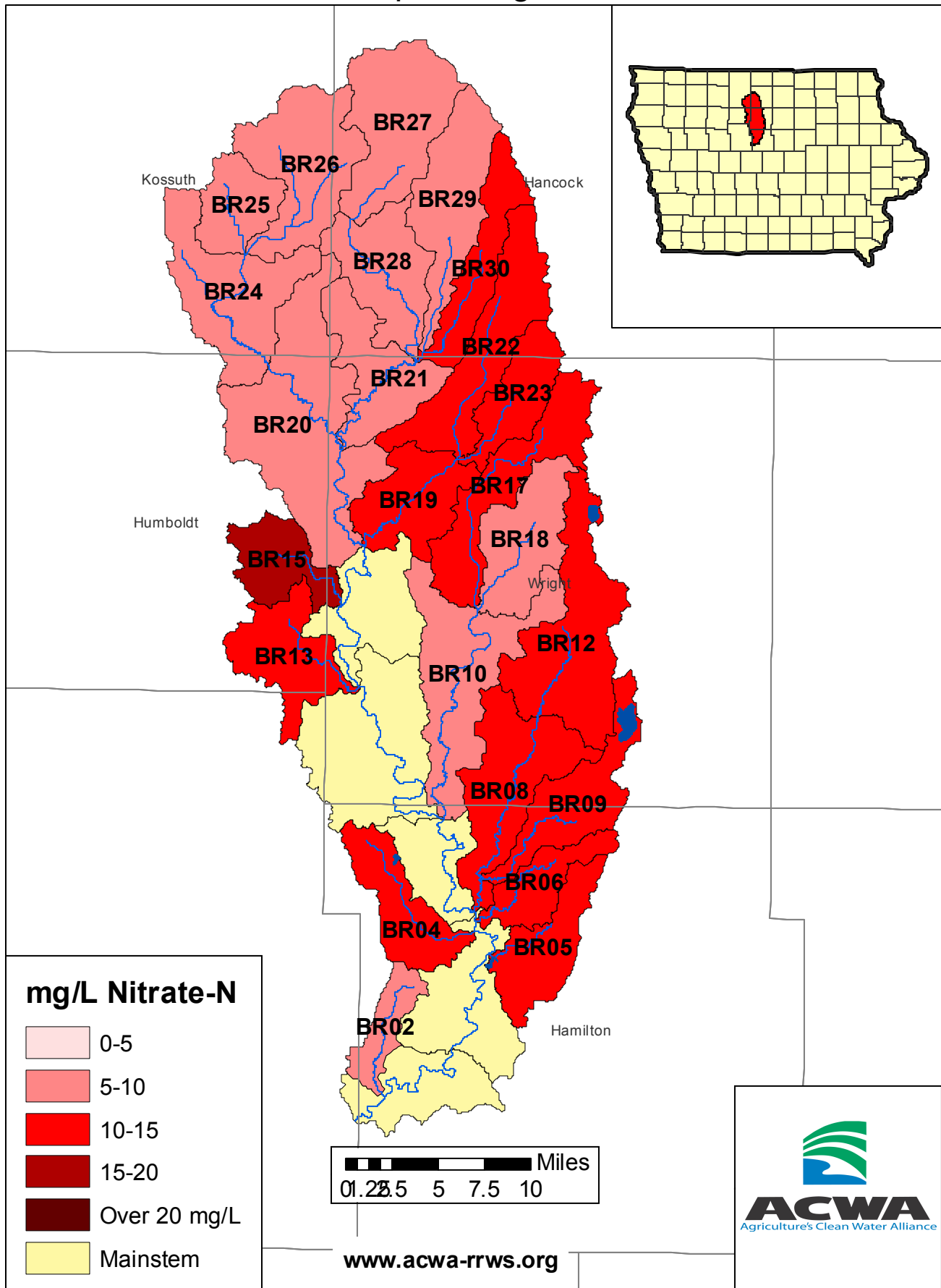


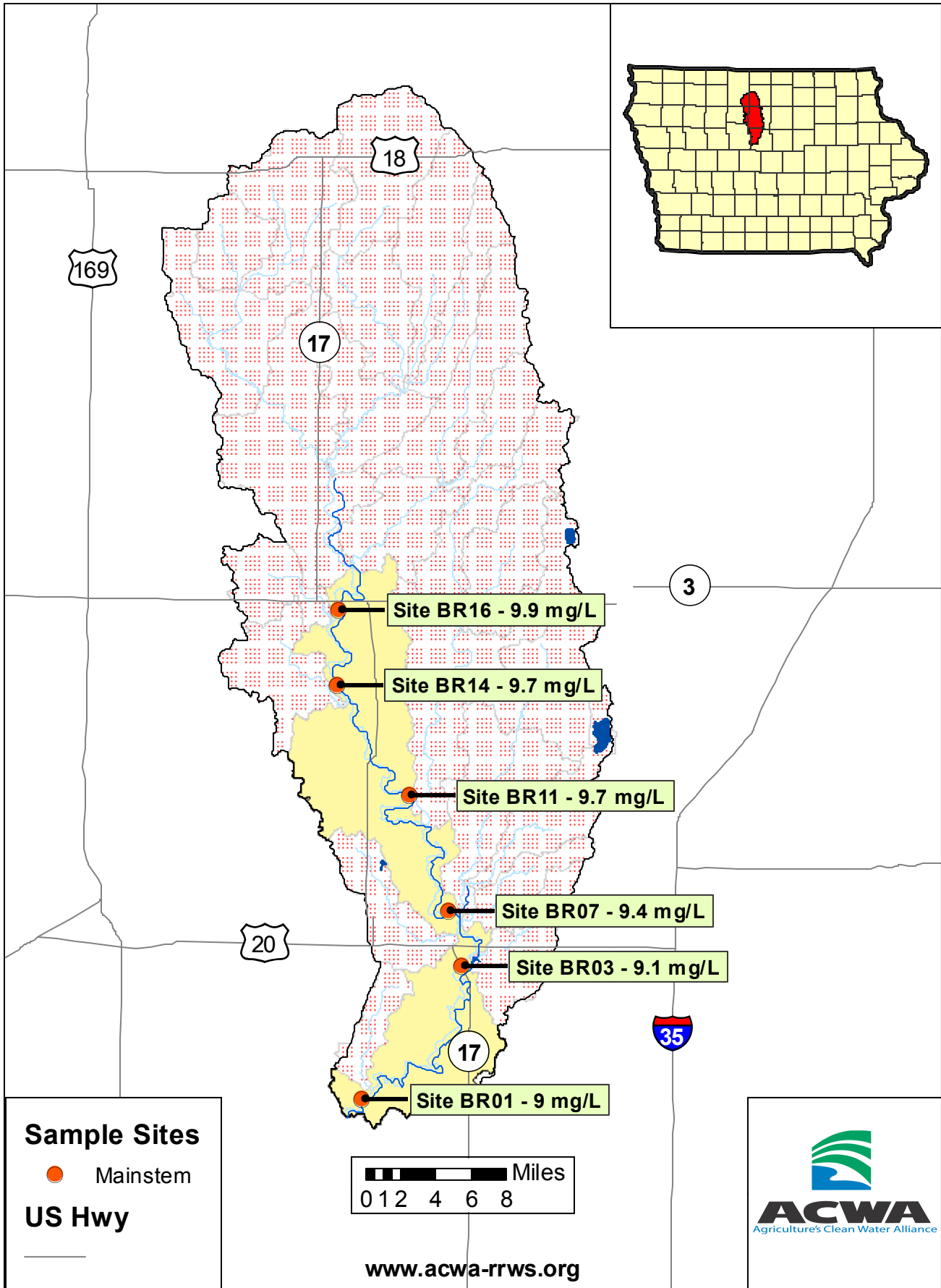
2018 Ave. Nitrate Concentrations-Boone River Tributaries

April - August



2018 Ave. Nitrate Concentrations-Boone River

April - August



2018 Average Nitrate-N Concentrations

Site Id	Stream Name	April	May	June	July	August	Annual
BR01	Boone River	10.7	11.7	7.7	8.4	6.8	9.0
BR02	Prairie Creek	11.8	12.7	11.9	7.1	4.2	9.5
BR03	Boone River	11.7	11.8	7.1	8.1	6.7	9.1
BR04	Brewers Creek	12.7	11.6	12.2	11.4	7.5	11.1
BR05	Ditch Numbers 166 and 206	9.3	16.0	14.2	13.9	11.7	13.0
BR06	Lyons Creek	14.1	16.2	14.2	13.4	11.8	13.9
BR07	Boone River	11.7	11.9	7.3	8.9	7.1	9.4
BR08	White Fox Creek	10.4	11.7	11.3	8.9	8.1	10.1
BR09	Buck Creek	11.8	12.3	11.7	9.2	7.6	10.5
BR10	Eagle Creek	9.8	11.6	12.3	7.9	7.8	9.9
BR11	Boone River	11.7	11.8	8.1	9.8	7.0	9.7
BR12	White Fox Creek	9.9	11.6	12.1	10.1	7.7	10.3
BR13	Drainage Ditch 3	13.8	14.6	15.7	9.8	8.3	12.5
BR14	Boone River	11.7	11.8	9.2	8.5	7.2	9.7
BR15	Drainage Ditch 9	19.8	18.1	18.6	10.2	9.3	15.2
BR16	Boone River	11.4	11.8	10.6	8.5	7.3	9.9
BR17	Eagle Creek	11.8	12.1	12.2	9.2	8.5	10.8
BR18	Little Eagle Creek	10.5	11.9	9.6	7.8	8.7	9.7
BR19	Otter Creek	12.8	13.5	13.4	9.5	10.1	11.9
BR20	Boone River	10.7	11.3	9.2	8.2	5.1	8.9
BR21	Boone River	11.6	12.2	10.5	8.4	4.1	9.4
BR22	West Otter Creek	13.2	13.4	13.3	9.9	9.6	11.9
BR23	Otter Creek	11.1	12.1	12.2	9.5	9.1	10.8
BR24	Prairie Creek	7.9	10.8	9.8	7.2	3.4	7.8
BR25	Drainage Ditch Number 117	6.7	9.8	9.5	6.3	1.2	6.7
BR26	Prairie Creek	6.7	10.1	9.5	5.6	1.5	6.7
BR27	Boone River	8.2	11.7	11.2	7.4	2.2	8.1
BR28	Boone River	9.7	12.3	11.7	8.2	3.7	9.1
BR29	Middle Branch Boone River	10.5	13.7	13.7	7.3	4.4	9.9
BR30	East Branch Boone River	11.4	13.3	13.9	8.6	6.9	10.8

Mainstem
No Data

All concentrations in mg/L, which is the same as ppm

