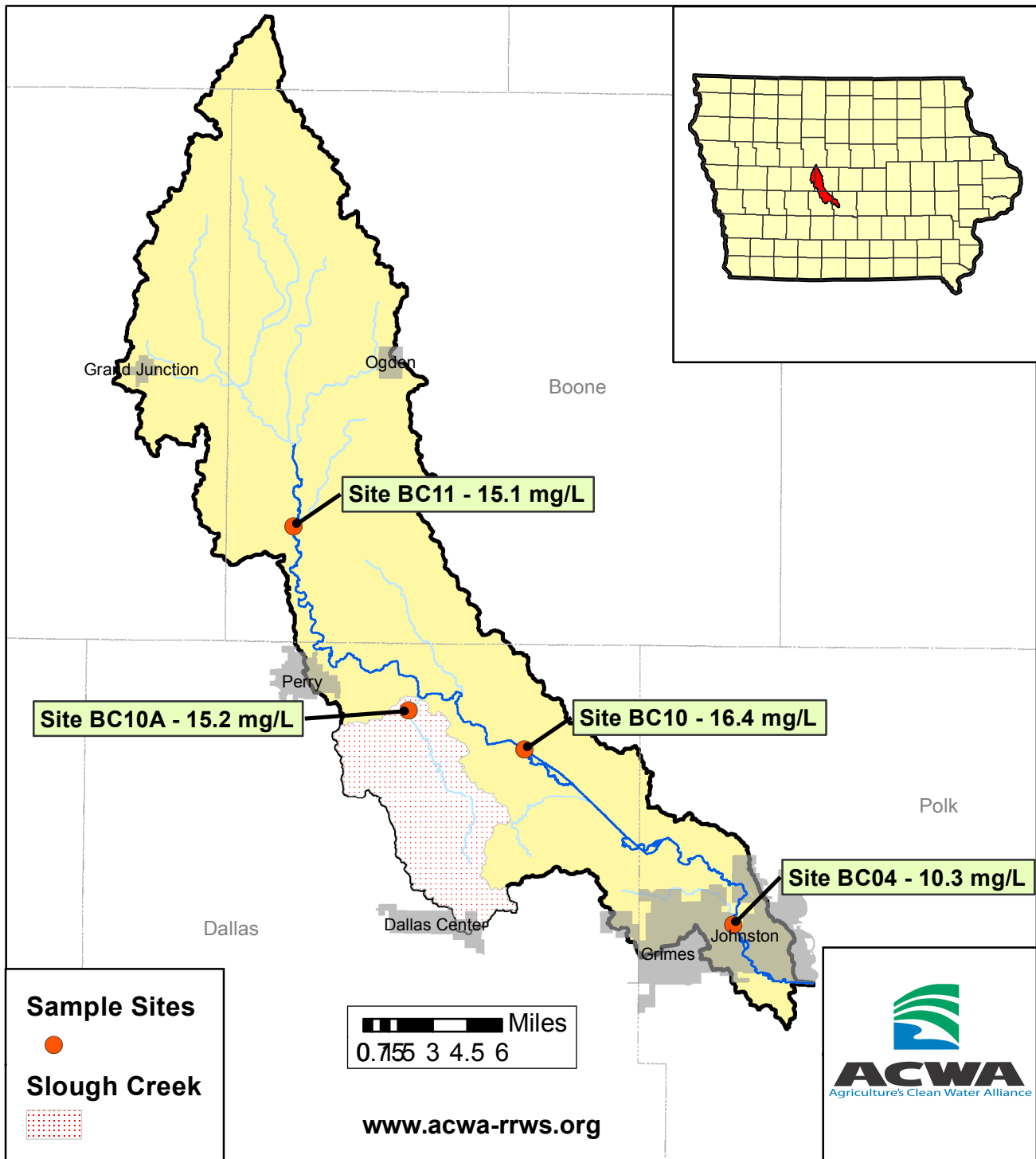


# 2015 Ave. Nitrate Concentrations-Beaver Creek

April - July



### 2015 Average Nitrate-N Concentrations

Site_Id	Stream_Name	April	May	June	July	Annual
BC11	Beaver Creek	19.2	17.2	17.5	6.4	<b>15.1</b>
BC10A	Slough Creek	16.2	16.5	18.1	9.9	<b>15.2</b>
BC10	Beaver Creek	16.3	18.8	19.4	11.1	<b>16.4</b>
BC04	Beaver Creek	10.1	10.7	15.3	5.1	<b>10.3</b>