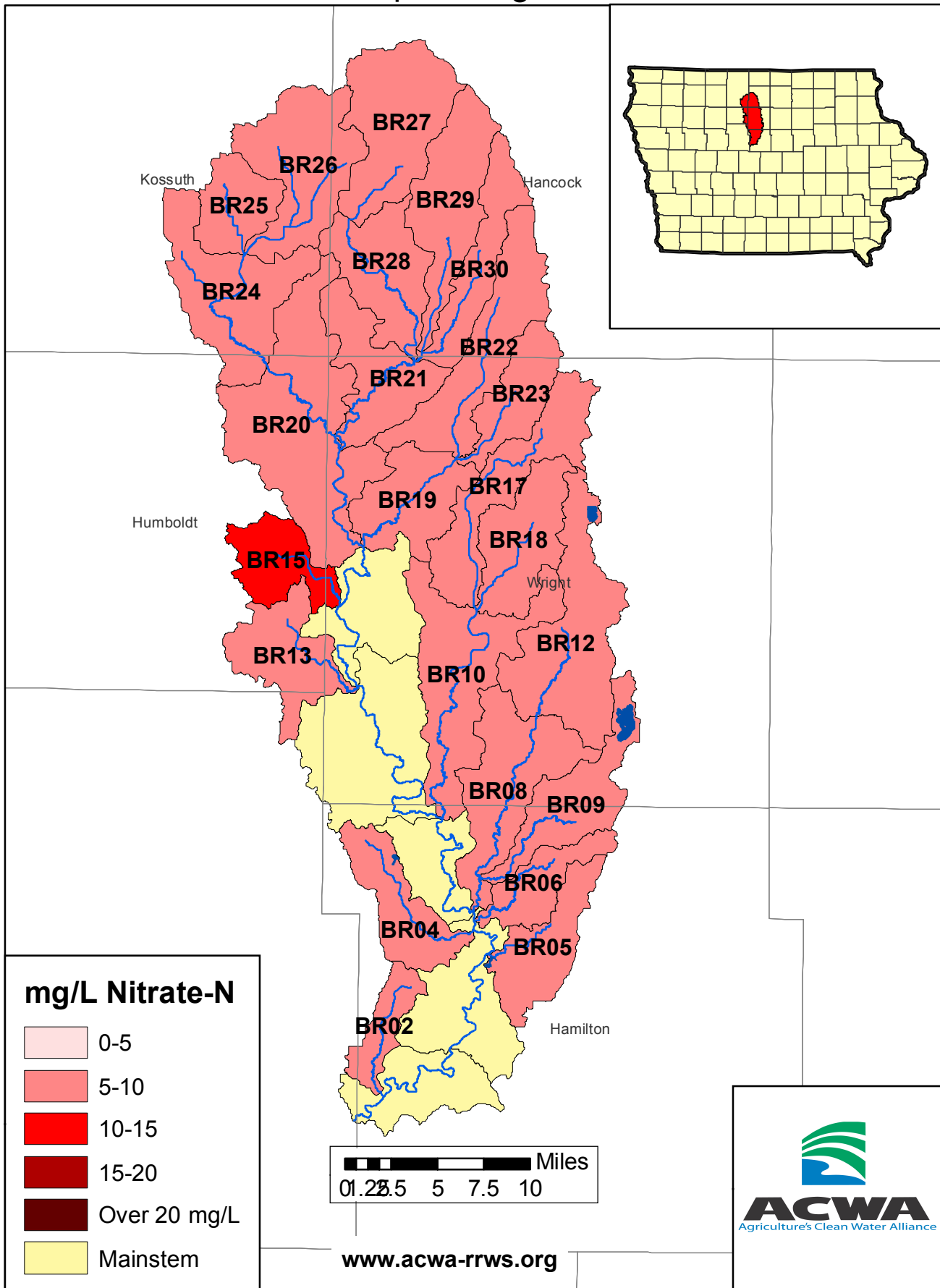


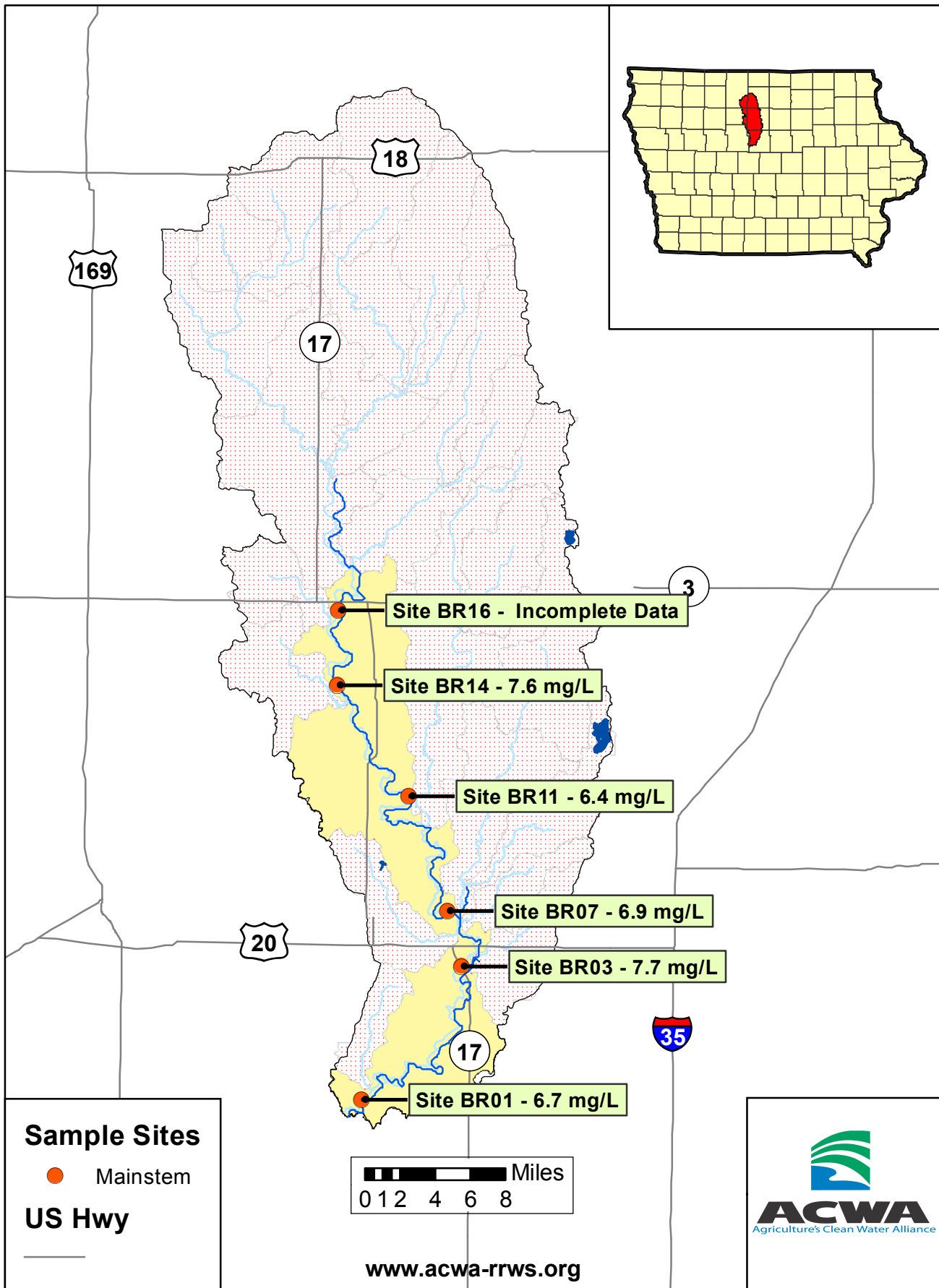
# 2019 Ave. Nitrate Concentrations-Boone River Tributaries

April - August



# 2019 Ave. Nitrate Concentrations-Boone River

## April - August



## 2019 Average Nitrate-N Concentrations

Site Id	Stream Name	April	May	June	July	August	Annual
BR01	Boone River	5.7	8.0	10.2	7.9	1.8	6.7
BR02	Prairie Creek	5.4	8.4	9.9	8.2	1.8	6.8
BR03 +	Boone River	6.3	8.2	10.7	11.2	2.4	7.7
BR04	Brewers Creek	6.2	10.0	11.7	7.9	5.7	8.3
BR05	Ditch Numbers 166 and 206	6.8	9.6	11.8	8.3	6.0	8.5
BR06	Lyons Creek	7.5	10.0	11.8	9.8	7.8	9.4
BR07	Boone River	6.2	8.0	10.7	7.0	2.3	6.9
BR08	White Fox Creek	5.6	7.5	9.3	7.6	2.6	6.5
BR09	Buck Creek	5.0	7.4	9.0	8.3	2.6	6.5
BR10	Eagle Creek	4.7	8.2	11.7	9.3	4.6	7.7
BR11	Boone River	6.0	8.0	10.7	5.1	2.5	6.4
BR12	White Fox Creek	4.7	8.3	11.8	8.9	4.6	7.7
BR13	Drainage Ditch 3	7.3	8.4	11.3	9.1	2.4	7.7
BR14	Boone River	6.8	8.9	11.2	8.5	2.6	7.6
BR15	Drainage Ditch 9	9.6	10.8	14.7	12.0	3.9	10.2
BR16 +	Boone River			11.6	9.4		
BR17	Eagle Creek	6.2	9.5	10.6	9.6	4.4	8.1
BR18	Little Eagle Creek	5.7	7.8	8.7	6.9	2.6	6.3
BR19	Otter Creek	7.2	8.9	11.6	10.6	3.9	8.4
BR20	Boone River	6.6	8.3	10.8	7.8	2.0	7.1
BR21	Boone River	7.2	9.5	11.4	7.4	1.6	7.4
BR22	West Otter Creek	7.9	10.2	12.0	11.5	4.1	9.1
BR23	Otter Creek	6.8	9.3	11.2	10.5	6.5	8.8
BR24	Prairie Creek	6.3	8.8	9.3	6.3	1.9	6.5
BR25	Drainage Ditch Number 117	6.2	8.3	8.2	4.8	1.0	5.7
BR26	Prairie Creek	5.9	9.2	8.7	4.7	0.9	5.9
BR27	Boone River	6.8	10.3	9.7	6.0	1.2	6.8
BR28	Boone River	7.3	9.8	10.9	7.5	1.4	7.4
BR29	Middle Branch Boone River	8.5	11.3	11.9	6.9	2.0	8.1
BR30	East Branch Boone River	7.8	10.3	12.1	8.4	1.2	7.9

Mainstem

No Data

All concentrations in mg/L, which is the same as ppm

+ Site data provided by Iowa Water Quality Information System (<https://iwqis.iowawis.org/>)



**ACWA**  
Agriculture's Clean Water Alliance

[www.acwa-rrws.org](http://www.acwa-rrws.org)