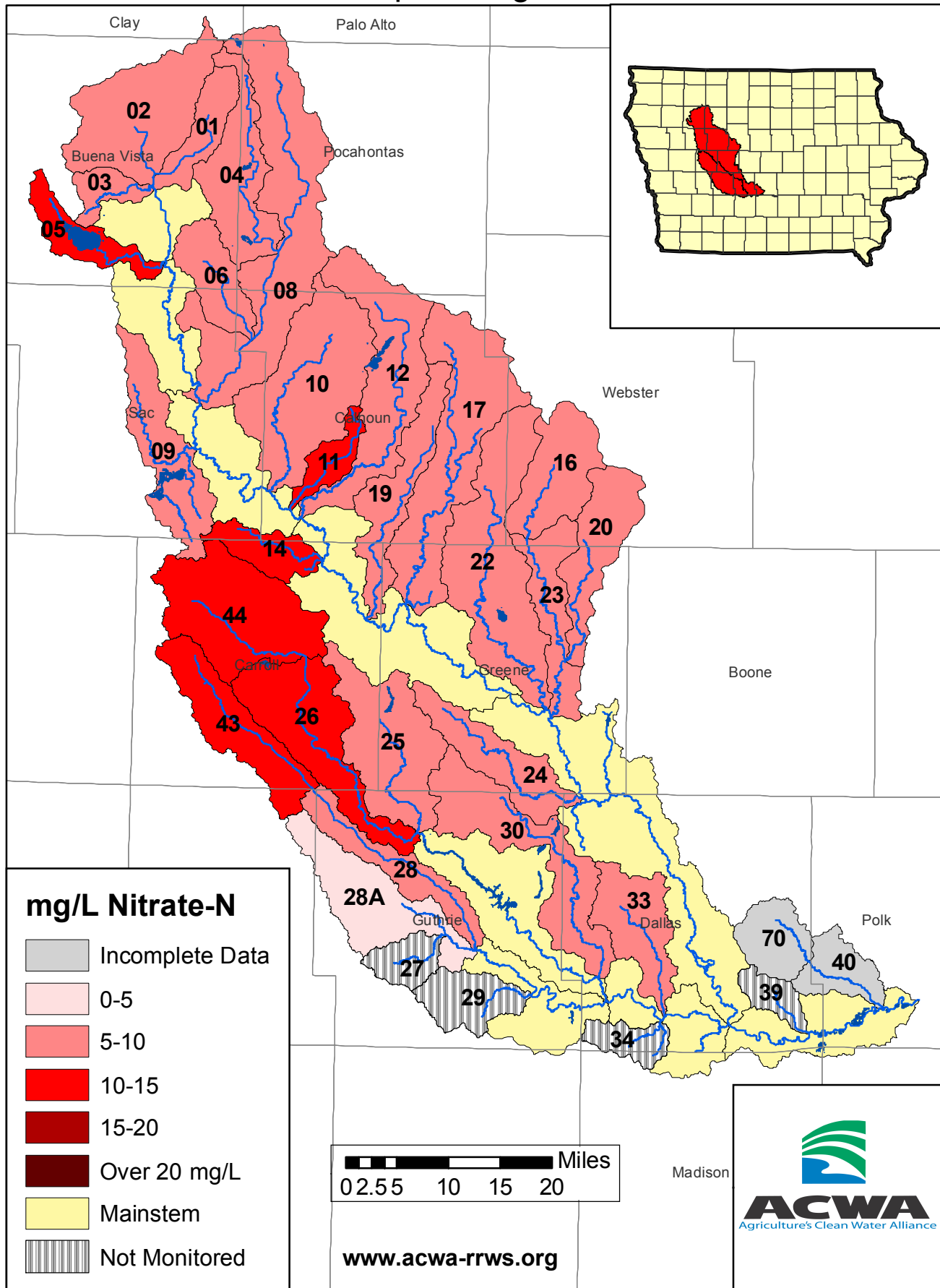


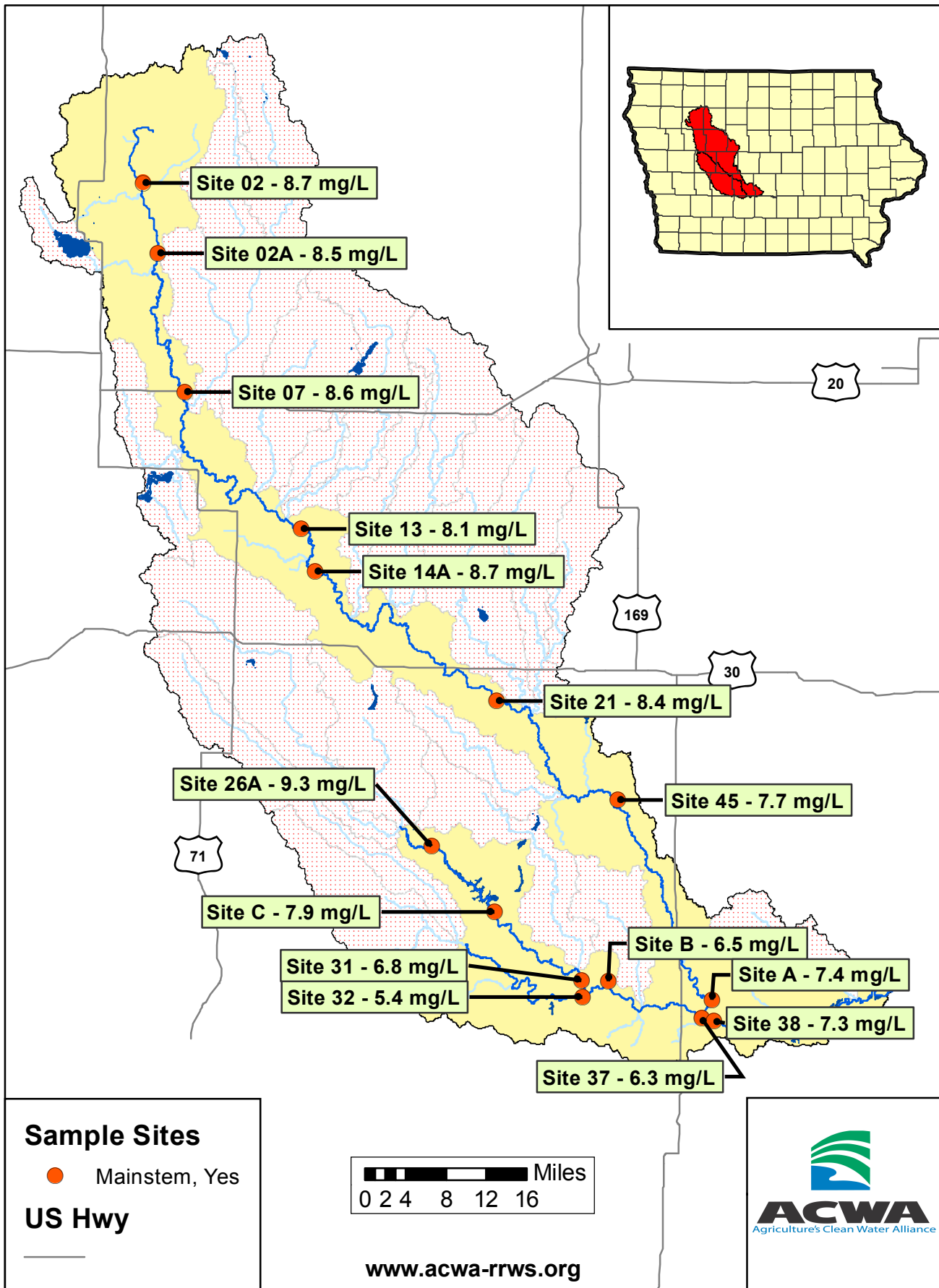
# 2019 Ave. Nitrate Concentrations-Raccoon River Tributaries

April - August



# 2019 Ave. Nitrate Concentrations-Raccoon River

## April - August



## 2019 Average Nitrate-N Concentrations

Site_Id	Stream_Name	April	May	June	July	August	Annual
01	Lateral 2	7.8	9.5	12.7	11.8	6.9	<b>9.7</b>
02	North Raccoon River	7.1	9.5	11.9	9.7	5.2	<b>8.7</b>
02A	North Raccoon River	6.5	9.1	11.9	9.9	5.1	<b>8.5</b>
03	Poor Farm Creek	6.5	9.6	12.0	10.4	5.3	<b>8.7</b>
04	Little Cedar Creek	5.9	8.6	11.1	9.6	5.9	<b>8.2</b>
04A	Cedar Creek	6.2	8.9	11.9	9.7	5.9	<b>8.5</b>
05	Outlet Creek	5.7	7.5	6.8	15.9	30.4	<b>13.3</b>
06	Prairie Creek	6.6	8.8	12.4	9.8	10.1	<b>9.5</b>
07	North Raccoon River	5.9	9.0	10.8	9.9	7.5	<b>8.6</b>
08	Cedar Creek	6.0	9.5	12.2	9.8	5.0	<b>8.5</b>
09	Indian Creek	3.9	6.5	9.3	7.1	4.5	<b>6.3</b>
10	Camp Creek	6.8	9.8	13.2	11.1	4.2	<b>9.0</b>
11	Prairie Creek	7.0	10.1	13.2	12.1	9.0	<b>10.3</b>
12	Lake Creek	4.4	7.6	10.4	8.9	2.7	<b>6.8</b>
13	North Raccoon River	5.5	8.9	11.3	9.7	5.1	<b>8.1</b>
14	Elk Run	11.4	14.3	18.0	15.5	7.9	<b>13.4</b>
14A	North Raccoon River	6.3	9.5	12.0	9.9	5.8	<b>8.7</b>
16	West Buttrick Creek	5.9	8.7	11.6	9.0	2.3	<b>7.5</b>
17	Cedar Creek	5.1	8.3	11.1	9.4	3.6	<b>7.5</b>
19	Purgatory Creek	5.0	7.8	10.4	9.5	3.6	<b>7.3</b>
20	East Buttrick Creek	4.6	7.2	9.9	7.8	1.8	<b>6.2</b>
21 +	North Raccoon River	6.0	9.2	11.4	10.0	5.5	<b>8.4</b>
22	Hardin Creek	5.5	8.3	11.0	9.3	1.9	<b>7.2</b>
23	Buttrick Creek	4.9	7.8	10.5	7.9	1.9	<b>6.6</b>
24	Greenbrier Creek	5.1	7.3	10.5	8.6	2.5	<b>6.8</b>
25	Willow Creek	6.1	8.8	10.6	7.7	2.0	<b>7.0</b>
26	Middle Raccoon River	7.9	11.7	13.6	12.2	7.9	<b>10.6</b>
26A	Middle Raccoon River	7.2	9.5	12.8	11.0	6.3	<b>9.3</b>
28	Brushy Creek	6.6	8.0	9.8	10.2	7.6	<b>8.5</b>
28A	South Raccoon River	3.6	4.3	5.3	5.0	4.1	<b>4.5</b>
30	Mosquito Creek	5.7	7.7	11.0	8.3	1.5	<b>6.8</b>
31	Middle Raccoon River	4.6	6.8	9.9	8.4	4.3	<b>6.8</b>
32	South Raccoon River	3.6	4.4	6.7	7.2	5.1	<b>5.4</b>
33	Panther Creek	8.1	9.9	14.2	10.0	2.9	<b>9.0</b>

**Mainstem**

All concentrations in mg/L, which is the same as ppm

+ Site data provided by Iowa Water Quality Information System (<https://iwqis.iowawis.org/>)



**ACWA**  
Agriculture's Clean Water Alliance

## 2019 Average Nitrate-N Concentrations

Site_Id	Stream_Name	April	May	June	July	August	Annual
<b>37</b>	South Raccoon River	4.4	5.6	9.6	7.8	4.1	<b>6.3</b>
<b>38 +</b>	Raccoon River	5.4	7.5	10.3	9.0	4.4	<b>7.3</b>
<b>40 \$</b>	Walnut Creek	1.6		7.1	2.9	0.2	
<b>42A</b>	Brushy Creek	11.3	13.0	14.6	14.4	10.8	<b>12.8</b>
<b>42B</b>	Brushy Creek	12.4	14.5	16.1	16.0	13.5	<b>14.5</b>
<b>43</b>	Brushy Creek	9.8	11.8	13.6	13.0	11.2	<b>11.9</b>
<b>44</b>	Middle Raccoon River	8.7	10.8	13.4	12.7	10.6	<b>11.2</b>
<b>45</b>	North Raccoon River	5.6	8.4	11.1	9.4	4.0	<b>7.7</b>
<b>60</b>	Swan Lake Branch	9.4	11.0	15.4	11.9	1.4	<b>9.8</b>
<b>61</b>	Elm Branch	10.1	11.5	15.5	13.5	4.6	<b>11.0</b>
<b>70 \$</b>	Walnut Creek	3.6		10.5	6.3	0.8	
<b>A</b>	North Raccoon River	5.4	7.9	10.5	9.3	3.9	<b>7.4</b>
<b>B +</b>	South Raccoon River	4.6	6.3	9.4	7.1	5.4	<b>6.6</b>
<b>C +</b>	Middle Raccoon River	5.9	6.1	10.2	9.6		<b>7.9</b>
<b>WRR7</b>	Middle Raccoon River	8.3	11.6	13.7	12.7	7.9	<b>10.8</b>

Mainstem

All concentrations in mg/L, which is the same as ppm

No Data

+

Site data provided by Iowa Water Quality Information System (<https://iwqis.iowawis.org/>)

\$

Site data provided by Drake University Dept. of Environmental Science and Sustainability



**ACWA**  
Agriculture's Clean Water Alliance