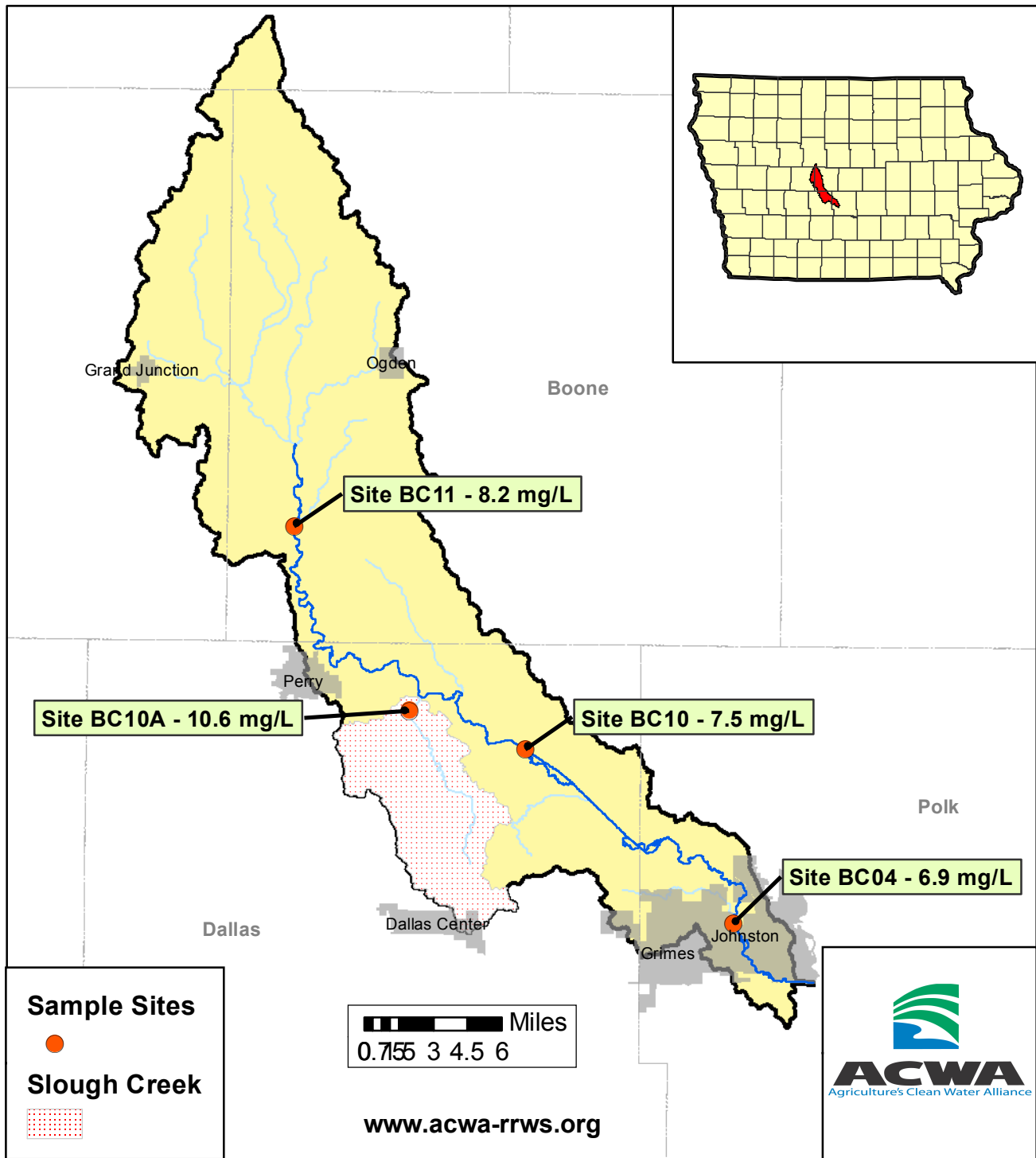


# 2019 Ave. Nitrate Concentrations-Beaver Creek

## April - August



### 2019 Average Nitrate-N Concentrations

Site_Id	Stream_Name	April	May	June	July	August	Annual
BC11	Beaver Creek	6.3	8.1	12.2	9.7	4.8	<b>8.2</b>
BC10A	Slough Creek	9.8	11.5	15.5	13.1	3.3	<b>10.6</b>
BC10	Beaver Creek	5.6	7.6	11.5	9.0	4.1	<b>7.5</b>
BC04	Beaver Creek	4.9	6.6	10.1	8.9	3.9	<b>6.9</b>